



The District - Residence 3

2.5-3.5 Bathrooms - 3-4 Bedrooms - 2 Car Garage - 2129 Sq. Ft.

Sales Center: 19530 Prairie Street, Northridge, California CA 91324

(866) 696-7432

Elevation A - Exterior Color Palette 1



To improve our homes, Shea Homes reserves the right to change features, prices or plans without notice. Windows and doors vary per elevation and per home site location. Floor plan measurements within the Shea Homes Spacebuilder are approximate.



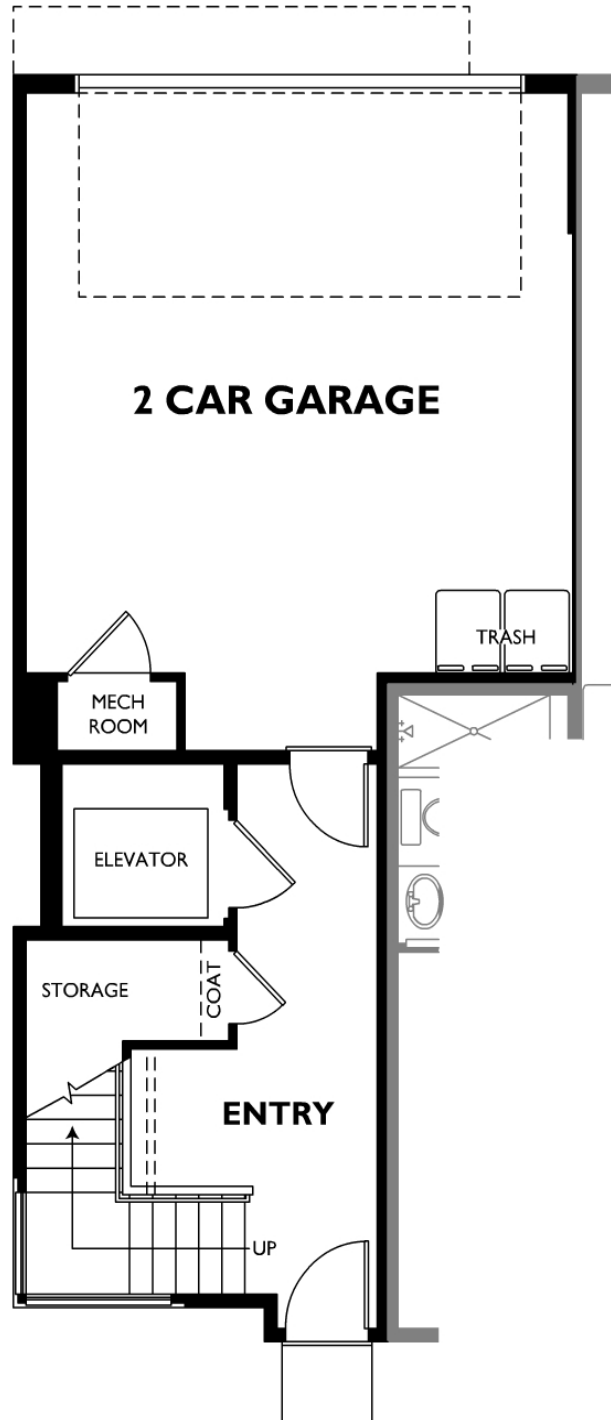
The District - Residence 3

2.5-3.5 Bathrooms - 3-4 Bedrooms - 2 Car Garage - 2129 Sq. Ft.

Sales Center: 19530 Prairie Street, Northridge, California CA 91324

(866) 696-7432

Floor 1 (Elevation A)



The following options are available but not selected: Bedroom 3



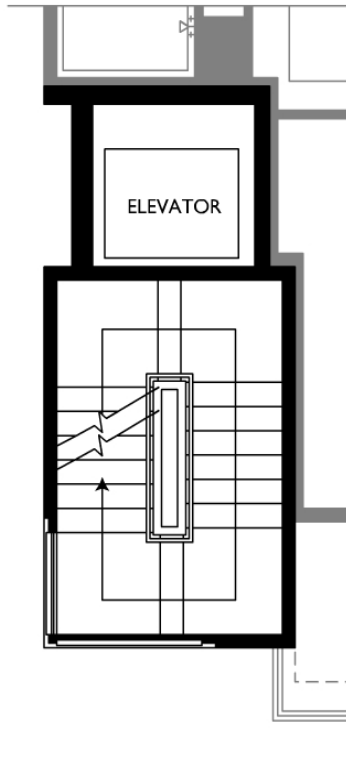
The District - Residence 3

2.5-3.5 Bathrooms - 3-4 Bedrooms - 2 Car Garage - 2129 Sq. Ft.

Sales Center: 19530 Prairie Street, Northridge, California CA 91324

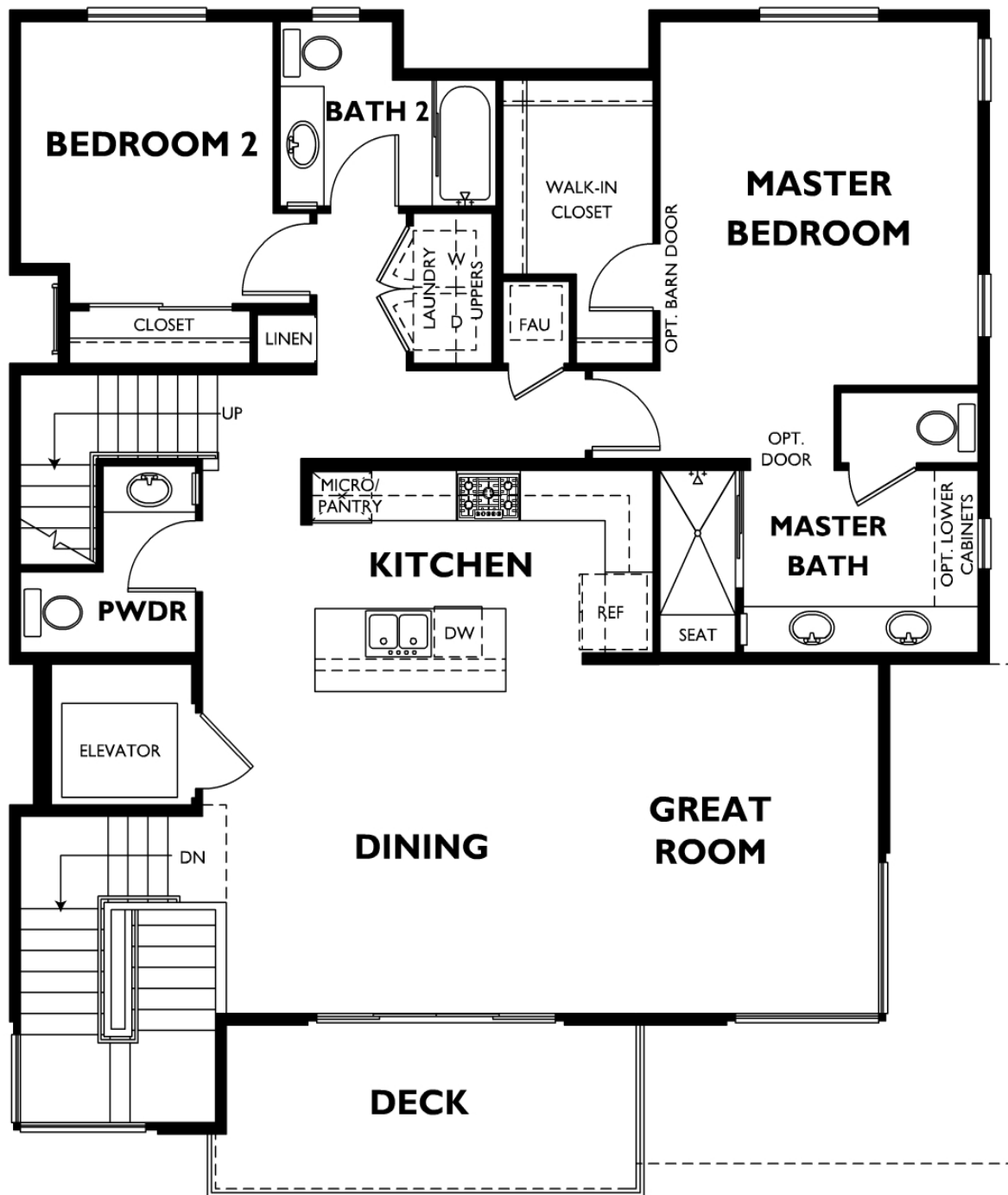
(866) 696-7432

Floor 2 (Elevation A)



The following options are available but not selected: Bedroom 3

Floor 3 (Elevation A)



The following options are available but not selected: Bedroom 3



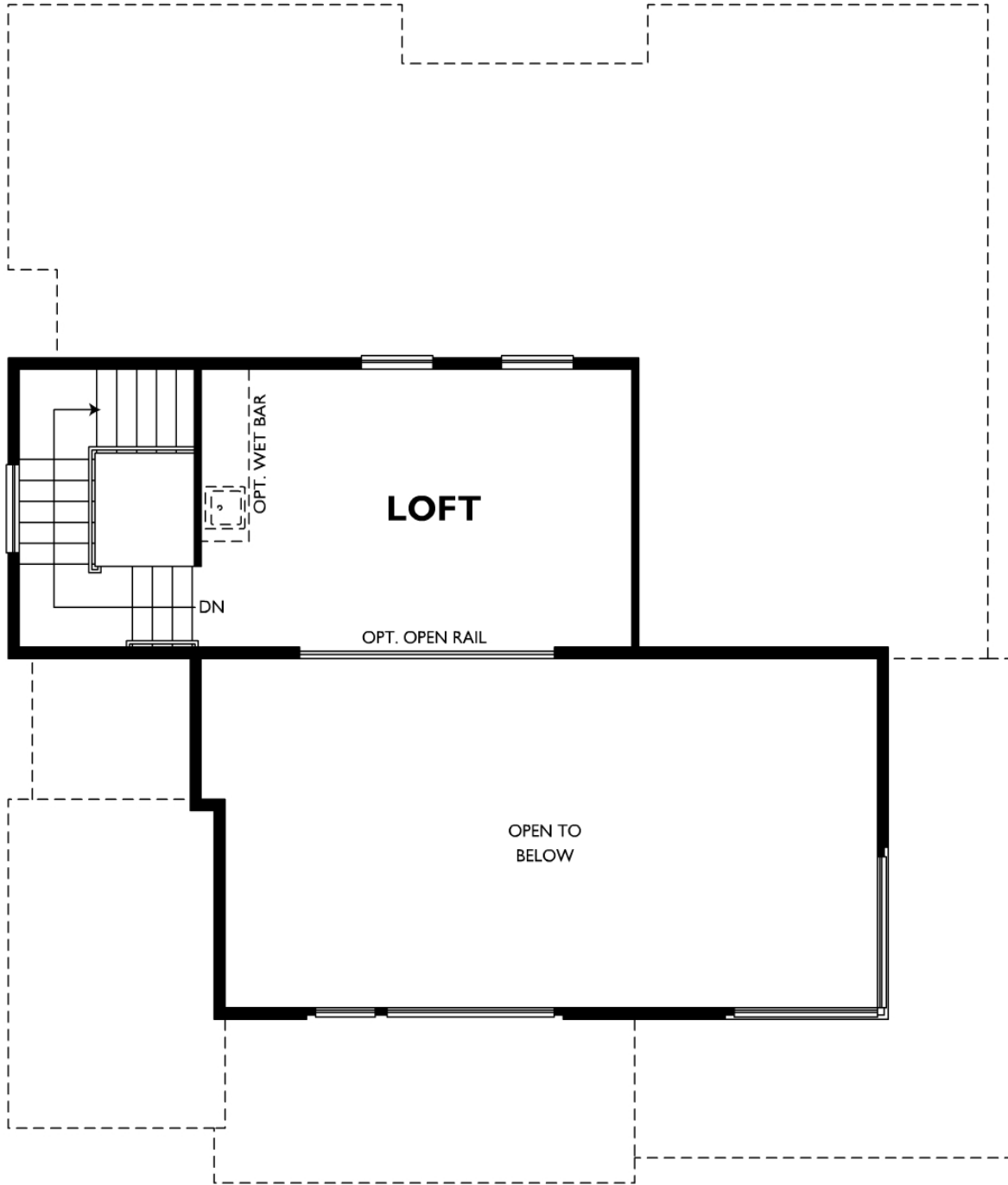
The District - Residence 3

2.5-3.5 Bathrooms - 3-4 Bedrooms - 2 Car Garage - 2129 Sq. Ft.

Sales Center: 19530 Prairie Street, Northridge, California CA 91324

(866) 696-7432

Floor 4 (Elevation A)



The following options are available but not selected: Bedroom 3