



## The District - Residence 5X

3.5 Bathrooms - 2-4 Bedrooms - 2 Car Garage - 1814 Sq. Ft.

Sales Center: 19530 Prairie Street, Northridge, California CA 91324

(866) 696-7432

## Elevation Townhome Triplex - Exterior Color Palette 1



Floor plans and renderings are artist's conception based on preliminary information. Some home sites may be pre-plotted for specific variations. Please consult your Community Representative for details. In an effort to improve our homes, Shea Homes reserves the right to change features, prices or plans without notice. Windows and doors vary per elevation and per home site location. Floor plan measurements within the Shea Homes Spacebuilder are approximate.



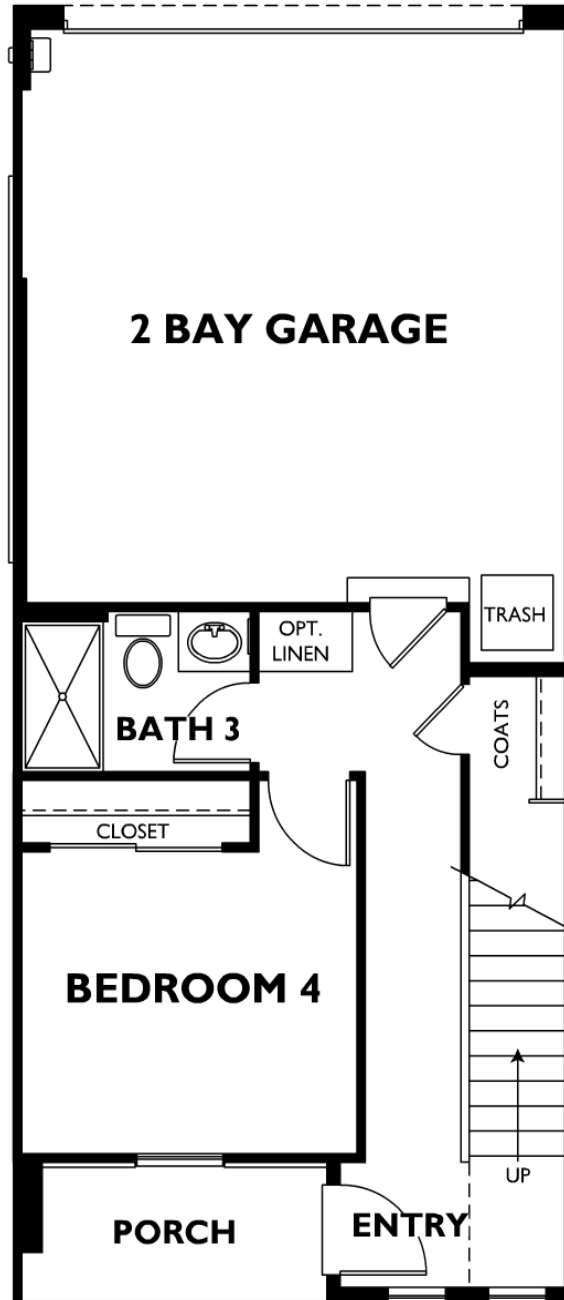
## The District - Residence 5X

3.5 Bathrooms - 2-4 Bedrooms - 2 Car Garage - 1814 Sq. Ft.

Sales Center: 19530 Prairie Street, Northridge, California CA 91324

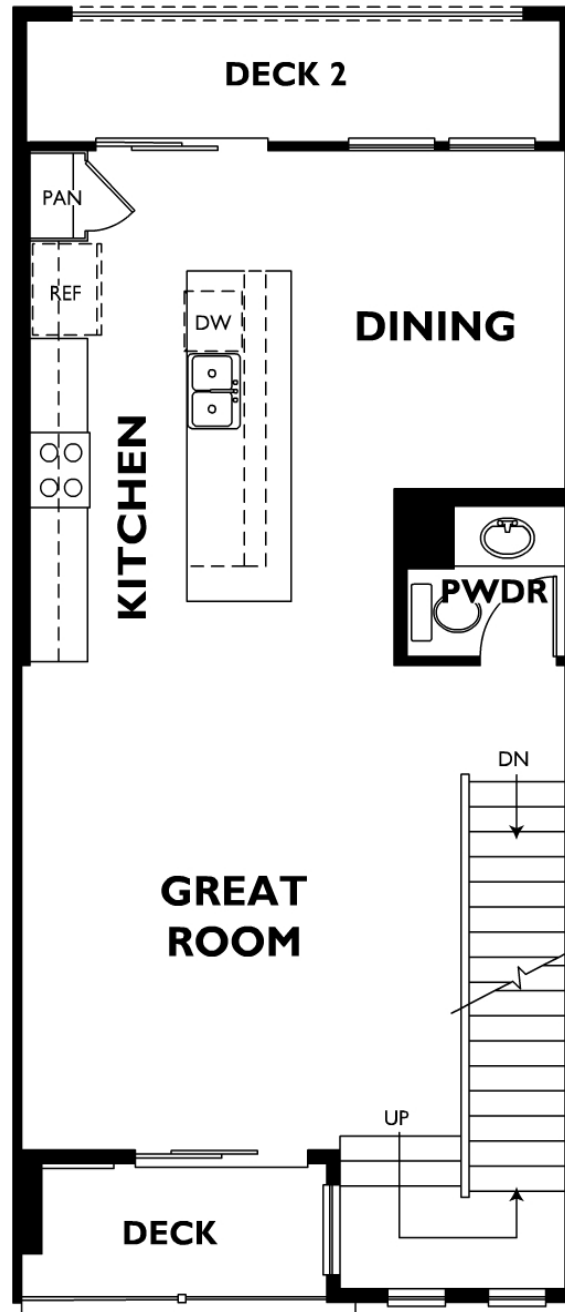
(866) 696-7432

### Floor 1



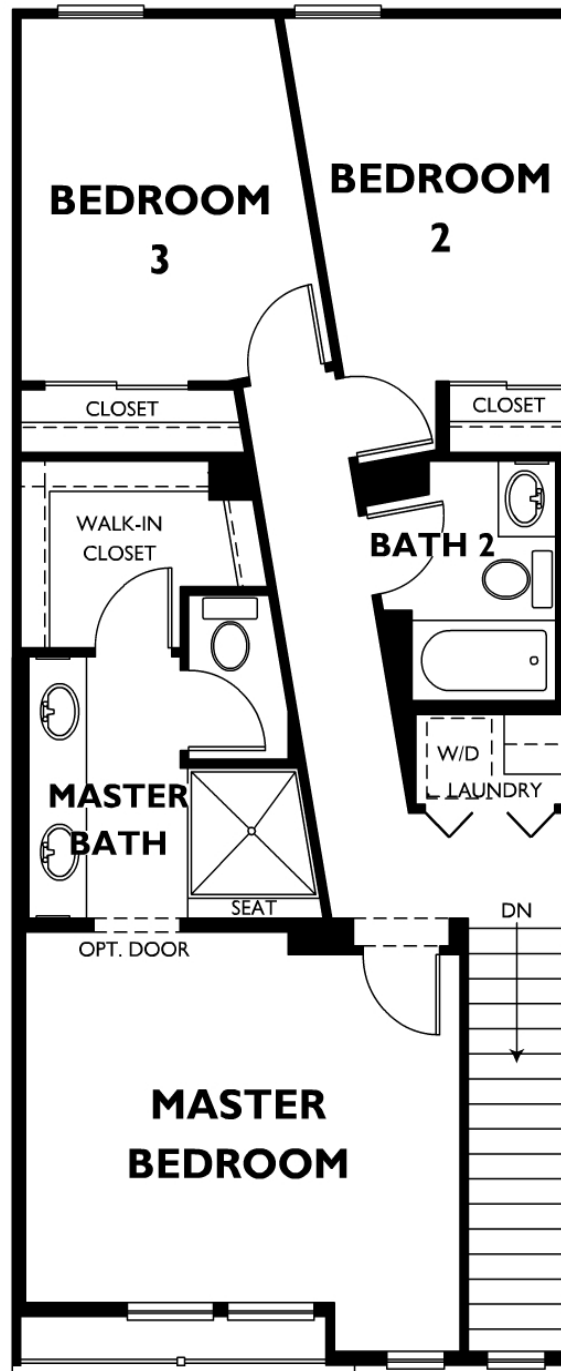
The following options are available but not selected: Study, Junior Master, Master Bedroom 2

**Floor 2**



The following options are available but not selected: Study, Junior Master, Master Bedroom 2

**Floor 3**



The following options are available but not selected: Study, Junior Master, Master Bedroom 2